

Maryland Traffic Safety Facts 2007

YOUNG DRIVERS



Maryland Department of Transportation
State Highway Administration
Office of Traffic and Safety

Driving Safely in Maryland

“In 2007, there were 18,993 young driver-involved crashes, accounting for 18.8% of the total crashes in Maryland.”

“Fixed object crashes accounted for more than one-third of the fatal young driver involved crashes.”

Introduction

In this fact sheet young drivers are defined as being 20 years old or younger. In 2007, young driver involved fatalities comprised 18% of the total fatalities in Maryland. There were a total of 18,993 young driver-involved crashes, accounting for 18.8% of the total crashes in Maryland. Over 60% were property damage only crashes and 11,666 persons were injured.

Summary

- ❑ In 2007, there were 18,993 young driver-involved crashes, accounting for 18.8% of the total crashes in Maryland.
- ❑ Forty-three young drivers were killed in 2007, which is 7% of the total fatalities in Maryland.
- ❑ In 2007, total young driver-involved crashes occurred on Thursdays (18.0%) whereas fatal young driver-involved crashes occurred on Fridays (20.4%).
- ❑ Over 50% of the total young driver-involved crashes occurred between the hours of 12PM and 8PM and the fatal young driver-involved crashes occurred between 4PM and 12 AM.
- ❑ Alcohol/drugs were involved in 29 of the 98 fatal young driver-involved crashes.
- ❑ Over 76% of the young drivers killed and 57% of the young drivers involved in crashes were male.
- ❑ One-half (50.5%) of the passengers involved and 63% passengers killed were between the ages of 16-19.
- ❑ In 2007, 18.6% of the young drivers killed did not use any safety equipment.
- ❑ Fixed object crashes accounted for more than one-third of the fatal young driver-involved crashes.
- ❑ The young driver crash rate per 100 Million Vehicle Miles Traveled was highest in Charles County (58.02) and young driver crash rate per 10,000 population was highest in Worcester County (65.42).

Young Driver-Involved Crash Trend and Severity

- In 2007, there were 18,993 young driver-involved crashes, accounting for 18.8 % of the total crashes in Maryland.
- There were a total of 112 young driver-involved fatalities, which accounted for 18% of all fatalities in Maryland. In 2007, 43 young drivers were killed in crashes.

“In 2007, there were 18,993 young driver-involved crashes, accounting for 18.8% of the total crashes in Maryland.”

Table 1 Young Driver-Involved Fatalities, 1998-2007

Year	Young Driver-Involved Fatalities		Young Drivers Killed		All Fatalities	
	Number	Percent	Number	Percent	Number	Percent
1998	128	21.1	45	7.4	606	100.0
1999	156	26.1	66	11.0	598	100.0
2000	134	21.7	51	8.3	617	100.0
2001	135	20.4	55	8.3	661	100.0
2002	135	20.4	49	7.4	661	100.0
2003	146	22.4	52	8.0	651	100.0
2004	122	19.0	57	8.9	643	100.0
2005	113	18.1	42	6.7	614	100.0
2006	111	17.1	48	7.4	651	100.0
2007	112	18.2	43	7.0	615	100.0

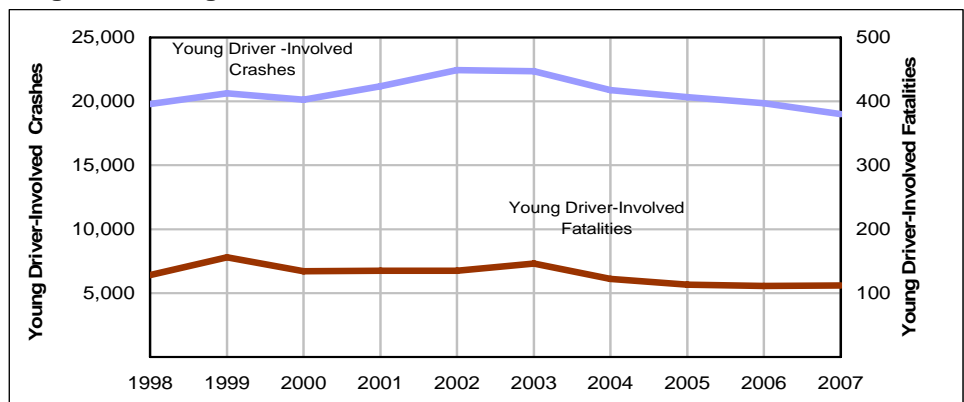
“Property damage only crashes accounted for nearly 61% of the total young driver-involved crashes, and a total of 11,666 persons were injured.”

- Property damage only crashes accounted for nearly 61% of the total young driver-involved crashes, and a total of 11,666 persons were injured.

Table 2 Young Driver-Involved Crashes by Crash Severity, 2003-2007

Year	Fatal Crashes	Fatalities	Injury Crashes	Number Injured*	Property Damage Only	Total
2003	125	146	8,855	14,373	13,374	22,354
2004	109	122	8,315	12,980	12,458	20,882
2005	100	113	8,174	13,281	12,044	20,318
2006	102	111	7,808	12,535	11,947	19,857
2007	98	112	7,357	11,666	11,538	18,993

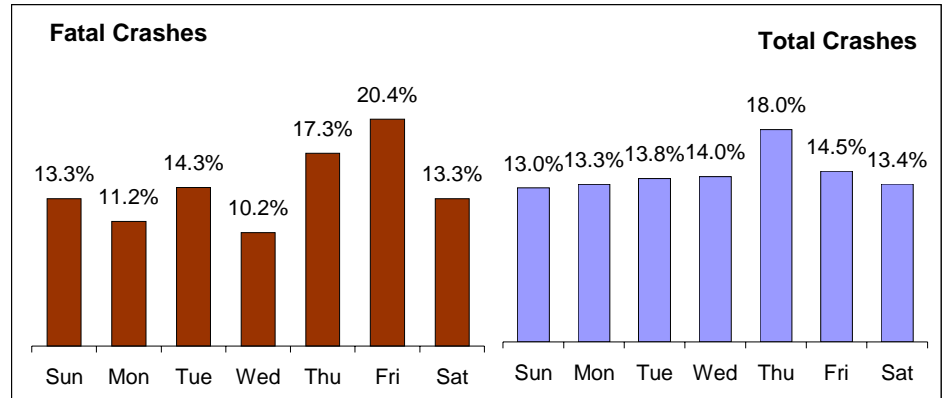
Figure 1 Young Driver-Involved Crashes and Fatalities, 1998-2007



Temporal Patterns

- Almost 33% of the young driver-involved crashes occurred on Thursdays and Fridays.
- In 2007, 20.4% of all fatal young driver-involved crashes occurred on Fridays.

Figure 2 Young Driver-Involved Crashes by Day of Week, 2007



“Almost 33% of the young driver-involved total crashes occurred on Thursdays and Fridays.”

“In 2007, 50% of the young driver-involved fatal crashes occurred between 4PM and 12AM.”

- In 2007, 50% of the young driver-involved fatal crashes occurred between 4PM and 12 AM.

Table 3 Young Driver-Involved Crashes by Time of Day, 2007

Time of Day	Fatal Crashes		Total Crashes	
	Number	Percent	Number	Percent
12:00AM-03:59AM	19	19.4	1,660	8.7
04:00AM-07:59AM	9	9.2	1,681	8.9
08:00AM-11:59AM	6	6.1	2,692	14.2
12:00PM-03:59PM	15	15.3	4,706	24.8
04:00PM-07:59PM	21	21.4	5,094	26.8
08:00PM-11:59PM	28	28.6	3,160	16.6
Unknown	0	0.0	0	0.0
Total	98	100.0	18,993	100.0

Spatial Patterns

- The majority of the total young driver-involved crashes occurred in daylight, whereas 53% of the fatal crashes occurred at night.

Table 4 Young Driver-Involved Crashes by Illumination, 2007

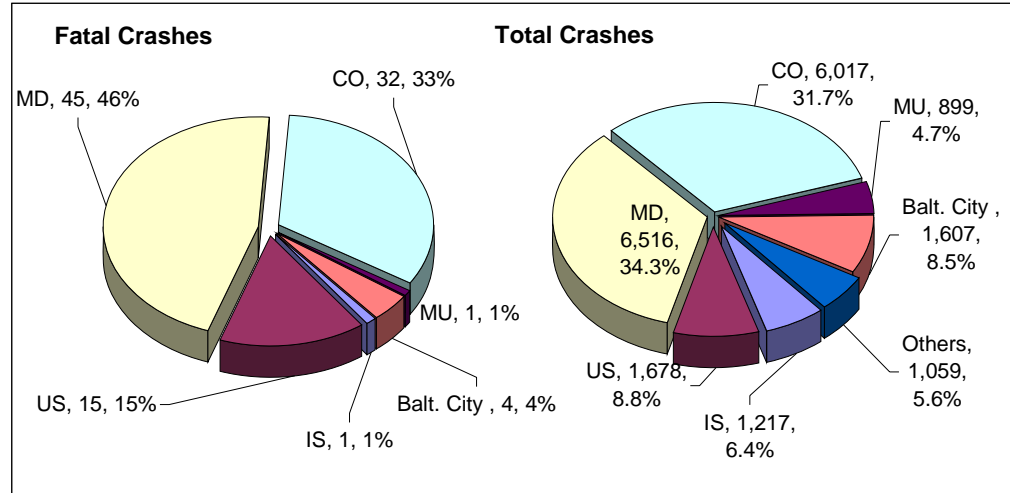
Illumination	Fatal Crashes		Total Crashes	
	Number	Percent	Number	Percent
Daylight	43	43.9	11,780	62.0
Dawn / Dusk	3	3.1	829	4.4
Dark Lights On	24	24.5	4,498	23.7
Dark Lights Off	28	28.6	1,824	9.6
Other / Unknown	0	0.0	62	0.3
Total	98	100.0	18,993	100.0

“The majority of the total young driver-involved crashes occurred in daylight, whereas 53% of the fatal crashes occurred at nighttime.”

- Two-thirds of the total young driver-involved crashes occurred on state or county highways, 34.3% and 31.7% respectively.
- The vast majority of the fatal crashes occurred on state or county highways, 46% and 33% respectively.

“Two-thirds of the total young driver-involved crashes occurred on state or county highways, 34.3% and 31.7% respectively.”

Figure 3 Fatal and Total Young Driver Crashes by Route Type, 2007



- Nearly 70% of the vehicles of young drivers involved in crashes were on roads with posted speed limit of 40MPH or less.
- In 2007, nearly one-quarter (23.3) of the vehicles of young drivers involved in fatal crashes were on roads with posted speed limit of 40MPH.

“Nearly 70% of the vehicles of young drivers involved in crashes were on roads with posted speed limit of 40MPH or less.”

Table 5 Vehicles Operated by Young Drivers Involved in Crashes by Posted Speed Limit, 2007

Posted Speed Limits (mph)	Vehicles Involved in Fatal Crashes		Vehicles Involved in Total Crashes	
	Number	%	Number	%
25 or less	7	16.3	3,891	19.2
30	6	14.0	3,064	15.1
35	4	9.3	3,670	18.1
40	10	23.3	3,247	16.0
45	3	7.0	1,586	7.8
50	8	18.6	1,612	8.0
55	4	9.3	1,930	9.5
60	0	0.0	41	0.2
65	0	0.0	460	2.3
Other/ Unknown	1	2.3	742	3.7
Total	43	100.0	20,243	100.0

Young Driver Age and Gender

- ❑ In 2007, over one-half of all young drivers killed were 17 and 20 years old (27.9% for each age group).
- ❑ Of all young drivers involved, those aged 16 had the fewest crashes.

“In 2007, over one-half of all young drivers killed were 17 and 20 years old (27.9% for each age group).”

Table 6 Young Driver Information by Age, 2007

Young Driver Age	Young Driver Fatalities		Young Drivers Involved in Crashes	
	Number	Percent	Number	Percent
16	6	14.0	1,934	9.6
17	12	27.9	4,389	21.7
18	6	14.0	4,758	23.5
19	7	16.3	4,669	23.1
20	12	27.9	4,493	22.2
Total	43	100.0	20,243	100.0

- ❑ Over 76% of the young drivers killed and 57% of the young drivers involved in crashes were male.

“Over 76% of the young drivers killed and 57% of the young drivers involved in crashes were male.”

Table 7 Young Driver information by Gender, 2007

Gender	Young Driver Fatalities		Total Young Drivers Involved in Crashes	
	Number	Percent	Number	Percent
Male	33	76.7	11,618	57.4
Female	10	23.3	8,581	42.4
Unknown	0	0.0	44	0.2
Total	43	100.0	20,243	100.0

Alcohol/Drug Impaired Crashes

- ❑ Alcohol/Drugs were noted to be involved in 29 of the 98 fatal young driver-involved crashes.
- ❑ In 2007, 7% of the total young driver crashes reportedly involved alcohol, drugs or both.

“In 2007, 7% of the total young driver crashes reportedly involved alcohol, drugs or both.”

Table 8 Young Driver Crashes by Alcohol/Drug Condition, 2007

Crash Condition	Fatal Crashes		Total Crashes	
	Number	Percent	Number	Percent
Impaired	29	29.6	1,323	7.0
Non-Impaired	69	70.4	17,670	93.0
Total	98	100.0	18,993	100.0

Ages of Passengers in Vehicle of Young Drivers

- One-half (50.5%) of the passengers involved and 63% passengers killed were between the ages of 16-19.

Table 9 Passengers in Vehicle of Young Driver by Age, 2007

Age	Passenger Fatalities		Passengers Involved	
	Number	Percent	Number	Percent
Under 5	0	0.0	263	3.2
5 - 9	0	0.0	138	1.7
10 - 15	4	14.8	1,074	12.9
16 - 19	17	63.0	4,194	50.5
20 - 24	3	11.1	1,365	16.4
25 - 29	1	3.7	236	2.8
30 - 34	0	0.0	96	1.2
35 - 39	1	3.7	90	1.1
40 - 44	0	0.0	108	1.3
45 - 49	1	3.7	125	1.5
50 - 54	0	0.0	79	1.0
55 - 59	0	0.0	46	0.6
60 - 64	0	0.0	13	0.2
65 - 69	0	0.0	12	0.1
70 - 79	0	0.0	15	0.2
80 +	0	0.0	47	0.6
Unknown	0	0.0	400	4.8
Total	27	100.0	8,301	100.0

“One-half (50.5%) of the passengers involved and two-thirds passengers killed were between the ages of 16-19.”

Safety Equipments Used

- ❑ Over 87% of all young drivers involved in crashes were properly belted.
- ❑ In 2007, 18.6% of the young drivers killed did not use any safety equipment.

“In 2007, 18.6% of young drivers killed did not use any safety equipment.”

Table 10 Young Drivers Information by Safety Equipment Used, 2007

Young Drivers Safety Equipment Used	Young Drivers Fatalities		Young Drivers Involved	
	Number	Percent	Number	Percent
Lap Belts Only	0	0.0	83	0.4
Harnesses Only	0	0.0	182	0.9
Belt and Harness	10	23.3	14,079	69.5
Air Bag	10	23.3	111	0.5
Air Bag and Belts	6	14.0	3,560	17.6
Motorcycle Helmet	1	2.3	52	0.3
Eye Protection.	0	0.0	1	0.0
Helmet / Eye Protection	5	11.6	72	0.4
None	8	18.6	579	2.9
Other/Unknown	3	7.0	1,524	7.5
Total	43	100.0	20,243	100.0

Crash Types

- ❑ Rear end and fixed object crash types accounted for almost 48% of the total young driver-involved crashes.
- ❑ Fixed object crashes accounted for nearly 40% of the fatal young driver-involved crashes.

Table 11 Young Driver-Involved Crashes by Crash Type, 2007

Crash Type	Fatal Crashes		Total Crashes	
	Number	Percent	Number	Percent
Opposite Direction	17	17.3	2,171	11.4
Rear End	5	5.1	5,155	27.1
Left Turn	0	0.0	173	0.9
Right Turn	0	0.0	60	0.3
Sideswipe	5	5.1	999	5.3
Angle	11	11.2	3,065	16.1
Parked Vehicle	1	1.0	850	4.5
Pedestrian	16	16.3	229	1.2
Pedalcycle	0	0.0	88	0.5
Animal	0	0.0	140	0.7
Fixed Object	37	37.8	3,887	20.5
Other Object	0	0.0	129	0.7
Overturned	1	1.0	203	1.1
Other Non Collision	0	0.0	46	0.2
Off Road	3	3.1	562	3.0
Other/unknown	2	2.0	1,236	6.5
Total	98	100.0	18,993	100.0

“Fixed object crashes accounted for nearly 40% of the fatal young driver-involved crashes.”

County

- Young driver-involved crashes occurred most frequently in Baltimore, Prince George's and Montgomery Counties, 17.0%, 12.4% and 11.3% respectively.
- Fatal young driver-involved crashes were highest in Anne Arundel and Prince George's Counties (14.3% in each county)
- The young driver crash rate per 100 Million Vehicle Miles Traveled was highest in Charles County (58.02) and young driver crash rate per 10,000 population was highest in Worcester County (65.42).

“Young driver-involved crashes occurred most frequently in Baltimore, Prince George's and Montgomery Counties, 17.0%, 12.4% and 11.3% respectively.”

Table 13 Total and Fatal Young Driver-Involved Crashes and Crash Rates by County, 2007

County	Young Driver Crashes				VMT (millions)	Crash Rates (per 100M VMT)	Pop. *	Crash Rates (per 10,000 pop.)
	Fatal	Percent	Total	Percent				
Allegany	0	0.0	225	1.2	823	27.34	72,594	30.99
Anne Arundel	14	14.3	1,953	10.3	5,785	33.76	512,154	38.13
Baltimore	9	9.2	3,237	17.0	8,261	39.18	788,994	41.03
Calvert	3	3.1	384	2.0	762	50.39	88,223	43.53
Caroline	0	0.0	120	0.6	387	31.01	32,910	36.46
Carroll	4	4.1	659	3.5	1,298	50.77	169,220	38.94
Cecil	2	2.0	424	2.2	1,388	30.55	99,695	42.53
Charles	6	6.1	745	3.9	1,284	58.02	140,444	53.05
Dorchester	0	0.0	100	0.5	416	24.04	31,846	31.40
Frederick	4	4.1	713	3.8	3,009	23.70	224,705	31.73
Garrett	1	1.0	141	0.7	559	25.22	29,627	47.59
Harford	6	6.1	925	4.9	2,362	39.16	239,993	38.54
Howard	2	2.0	792	4.2	3,814	20.77	273,669	28.94
Kent	2	2.0	46	0.2	235	19.57	19,987	23.01
Montgomery	8	8.2	2,151	11.3	7,473	28.78	930,813	23.11
Prince George's	14	14.3	2,361	12.4	8,755	26.97	828,770	28.49
Queen Anne's	2	2.0	174	0.9	977	17.81	46,571	37.36
St. Mary's	2	2.0	408	2.1	847	48.17	100,378	40.65
Somerset	1	1.0	88	0.5	299	29.43	26,016	33.83
Talbot	3	3.1	214	1.1	627	34.13	36,193	59.13
Washington	5	5.1	607	3.2	2,091	29.03	145,113	41.83
Wicomico	2	2.0	507	2.7	1,016	49.90	93,600	54.17
Worcester	4	4.1	323	1.7	672	48.07	49,374	65.42
Baltimore City	4	4.1	1,696	8.9	3,626	46.77	637,455	26.61
Total	98	100.0	18,993	100.0	56,766	33.46	5,618,344	33.81

1. Source: * Maryland Department of Planning

“The young driver crash rate per 100 Million Miles Traveled was highest in Charles County (58.02) and young driver involved crash rate per 10,000 population was highest in Worcester County(65.42).”

Maryland Department of Transportation
State Highway Administration
Office of Traffic and Safety
Maryland Highway Safety Office

Prepared by:
National Study Center for Trauma & EMS
University of Maryland, School of Medicine

Contact: Tim Kerns at 410-328-4244
tkerns@som.umaryland.edu

*Driving Safely
in Maryland*

Last Edited on April 16, 2009